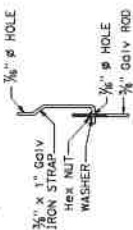


DIST	COUNTY	ROUTE	POST MILES TOTAL PROJECT	SHEET TOTAL NOS. SHEETS

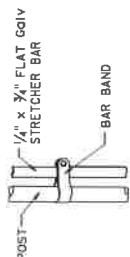
REGISTERED CIVIL ENGINEER	
<i>R.O. Smith</i>	
NOV 31, 2018	
PLANS APPROVAL DATE	
BY	
FOR ANY CHANGES TO THESE PLANS, THE ENGINEER SHALL BE NOTICED BY MAIL AT LEAST 10 DAYS BEFORE THE CHANGES ARE MADE. THE ENGINEER SHALL BE RESPONSIBLE FOR THE ACCURACY OF ALL DIMENSIONS AND MATERIALS SPECIFIED HEREON.	

NOTES:

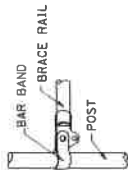
1. All material for abutment connection to be galvanized.
2. The chain link fabric shall be replaced by barbed wire strands at 12" maximum centers between the double posts.
3. When the height of the culvert makes it necessary to anchor a post to the top of the culvert, a cast iron shoe or other device approved by the Engineer shall be used.
4. Fencing over stream and around headwall may also use Barbed wire or Wire Mesh fencing with either wood post or steel post installation.
5. See Standard Plan A85 for Chain Link fence dimensions. See Standard Plan A86 for Barbed Wire and Wire Mesh fence dimensions and for wood post and steel post installation.



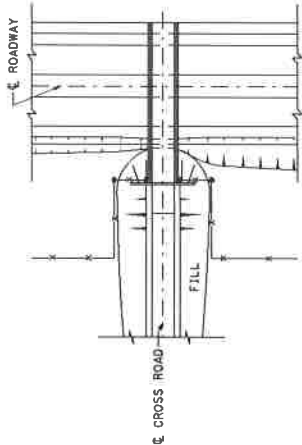
TRUSS TIGHTENER



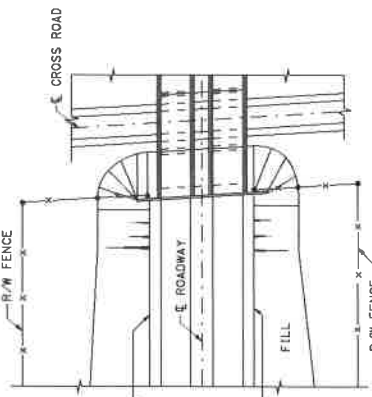
STRETCHER BAR



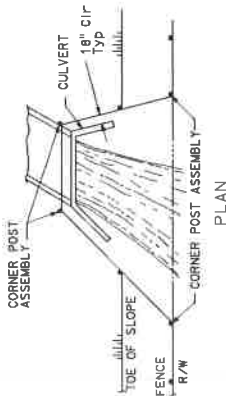
BRACE RAIL



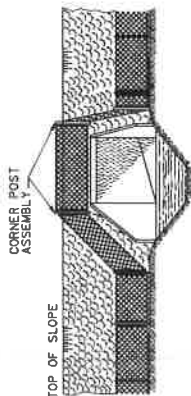
PLAN OF ROADWAY - OVERCROSSING



PLAN OF ROADWAY - UNDERCROSSING

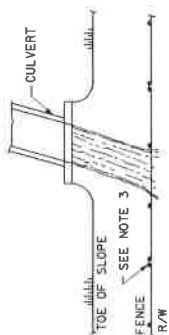


PLAN

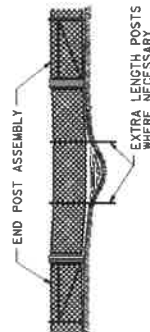


ELEVATION

See Note 4



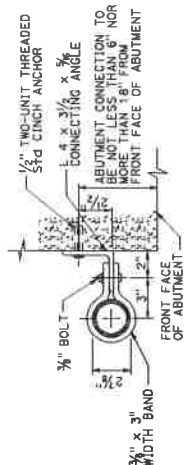
PLAN



ELEVATION

INSTALLATION OVER STREAM

INSTALLATION AROUND HEADWALL



ABUTMENT CONNECTION

TYPICAL INSTALLATION AT BRIDGES

STATE OF CALIFORNIA
DEPARTMENT OF TRANSPORTATION

CHAIN LINK FENCE DETAILS

NO. SCALE

A85B

SHEET

Return to Table of Contents