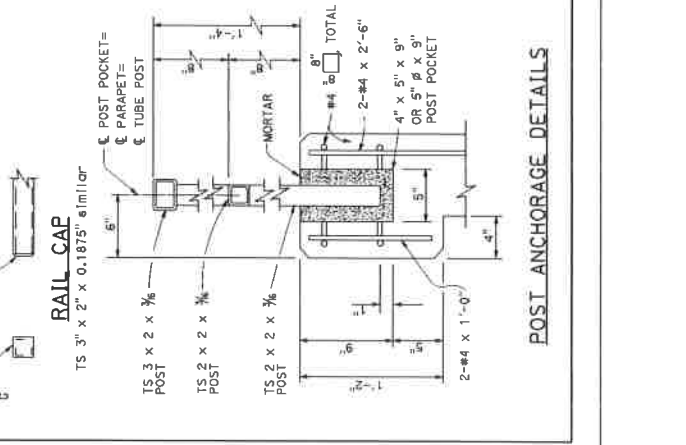
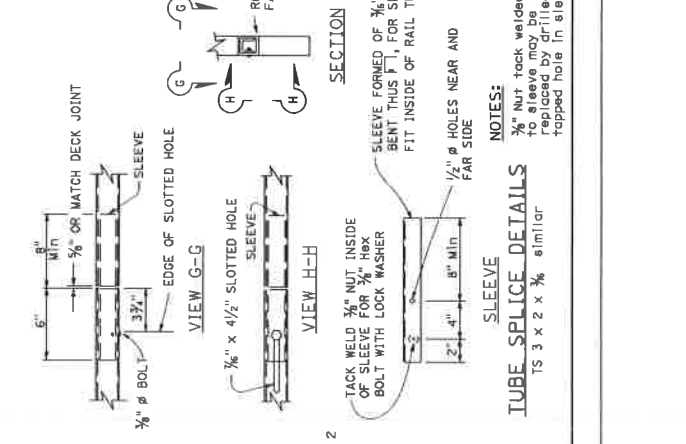
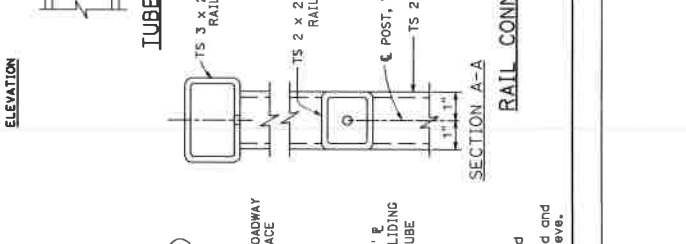
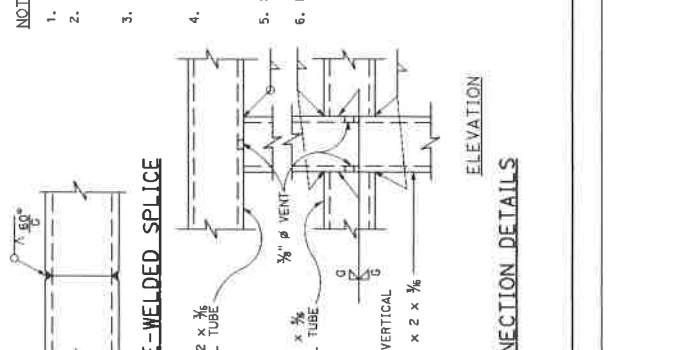
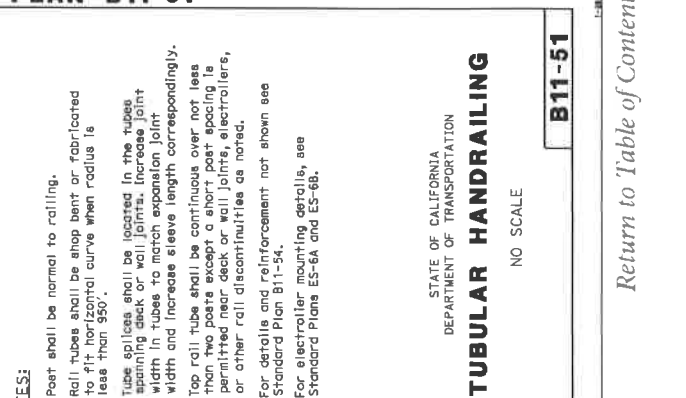
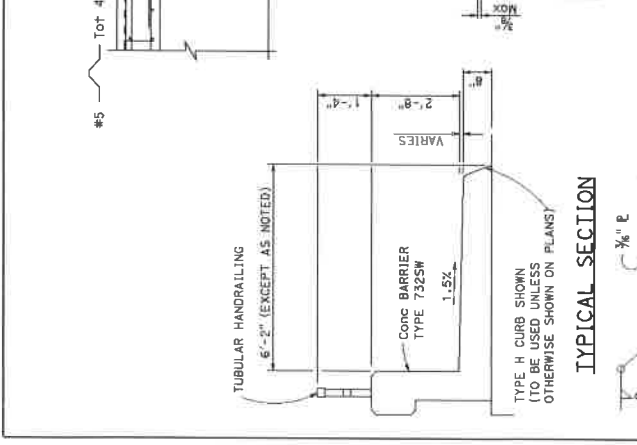
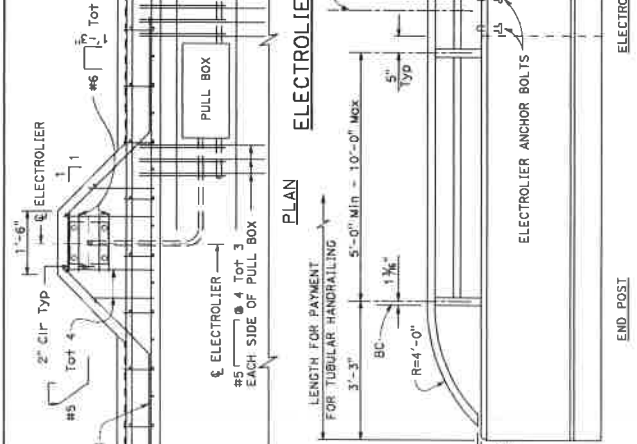
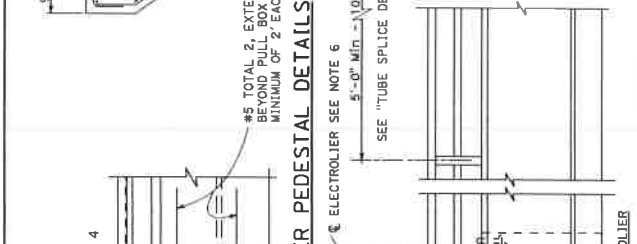
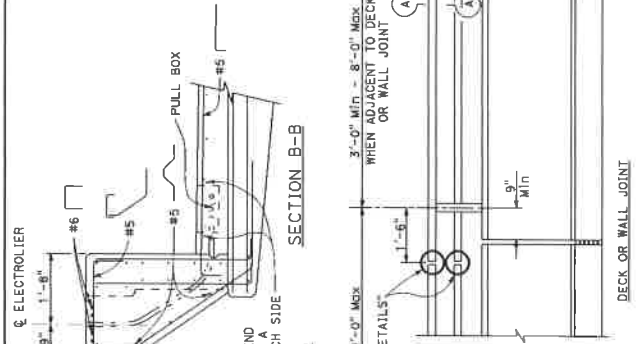


DIST.	COUNTY	ROUTE	POST MILES TOTAL PROJECT	SHEET TOTAL SHEETS



REGISTERED CIVIL ENGINEER  
 May 31, 2018  
 PLANS APPROVAL DATE  
 THESE PLANS SHALL NOT BE REPRODUCED FOR ANY PURPOSES WITHOUT THE WRITTEN CONSENT OF THE PLAN ENGINEER.



NOTES:  
 1. Post shall be normal to railing.  
 2. Rail tubes shall be shop bent or fabricated to fit the horizontal curve when radius is less than 500'.  
 3. Tube splices shall be located in the tubes spanning deck or wall joints. Increase joint width in tubes to match expansion joint width and increase sleeve length correspondingly.  
 4. Top rail tube shall be continuous over not less than two posts except a short post spacing is permitted near deck or wall joints, electroliners, or other rail discontinuities as noted.  
 5. For details and reinforcement not shown see Standard Plan B11-54.  
 6. For electroliner mounting details, see Standard Plans ES-6A and ES-6B.

STATE OF CALIFORNIA  
 DEPARTMENT OF TRANSPORTATION  
**TUBULAR HANDRAILING**  
 NO SCALE

**B11-51**

Return to Table of Contents